

The Revolutionary RFID Electronic Keys and Valuables Management System



RFID Technology



**Keys and Valuables
Safe-keeping**



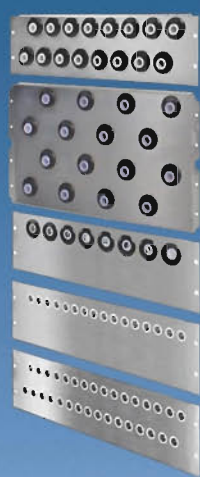
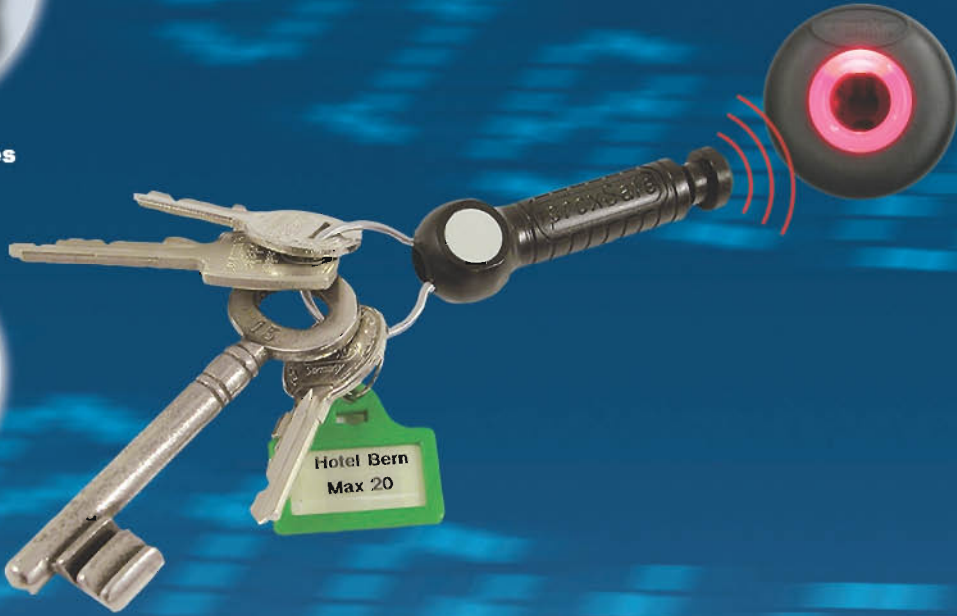
Intelligent Terminal



Innovative Accessories



**Network Friendly/
Powerful Web-based Software**



**Flexible and innovative keyslot panels
for different sized keys/valuables**



Flexible, Modular and Expandable

proxSafe flexx, an intelligent management system for keys and valuables, provides simple answers to your daily 'key' questions by means of advanced and field-proven RFID (radio frequency identification) and network technologies. Untraceable keys, unauthorised key removals and tedious manual record-keeping are now a thing of the past !

Whether you have a few or thousands of keys - proxSafe flexx provides a flexible modular solution that is easily expandable. Your keys and valuable objects are securely attached to a durable electronic key tag by means of an easy to use, self-locking, one-time seal. Every key tag has a unique number that is identified when it is removed and returned to the cabinet. proxSafe flexx offers optimal management, complete control and visible accountability on the movement of every key and valuable with instant and accurate audit trail reports.

proxSafe flexx is totally network-friendly. Operation of multiple key cabinets can be easily connected to PCs, networks or even access control systems. All information about users, keys and access rights is stored in the powerful Terminal that is equipped with a visual LCD display. The system automatically registers information on who has taken/returned which key at what time. This information builds into an easily managed traceability of which personnel is responsible for each key at any given time.

The system runs on a user-friendly web-based software with powerful features, allowing full configuration and operation of functions with standalone and network capability.

The powerful software is capable of allowing the administrator to remotely release any keys via the web browser without the need to be physically present at the system.



flexx32/flexx64 (clear/steel door)



flexx128



flexx512



panel small/large space

KEY BENEFITS

- Field-proven RFID technology
- Restrict key access to authorised users
- Save money with improved resources
- More control and accountability
- Save time
- Zero maintenance

POWERFUL FEATURES

- Flexible Configuration
- Modular concept for easy expansion
- Flexible door options (clear or steel door, swinging or pull-out door)
- Versatile keyslots space
- Six-Eyes principles security access
- Powerful web-based software
- Capability to audit over 30,000 keys and valuables in one single system

Technical Specifications	flexx32	flexx64	flexx128	flexx512
Housing(HxWxD mm)	465 x 609 x 210	698 x 609 x 210	1396 x 609 x 210	1793 x 985 x 699
Door options	Closed with steel door/window	Closed with steel door/window	Closed with steel door/window	Steel housing with 4 vertical drawers
Material	Sheet steel, powder coated	Sheet steel, powder coated	Sheet steel, powder coated	Sheet steel, powder coated
Power Supply	13.8V/DC, max 2.1A back-up battery	13.8V/DC, max 2.1A back-up battery	13.8V/DC, max 2.1A back-up battery	4 x 13.8V/DC, max 2.1A back-up battery
Terminal Interface	RS485/DeBus TCP/IP in additional with digiconnect	RS485/DeBus TCP/IP in additional with digiconnect	RS485/DeBus TCP/IP in additional with digiconnect	RS485/DeBus TCP/IP in additional with digiconnect
Weight	17 - 24 kg	22 - 30 kg	37 - 54 kg	TBA

Technical Specifications : Control Terminal with Keypad

- Dimensions:** 125 x 225 x 45 mm
- Housing:** ASA
- Card Reader:** mifare, Legic, ISO15693, HID, proxEntry and other proximity technologies
- PC Software:** Windows 98, 2000, XP
- User:** over 30,000 keys (2,000 per terminal)
- No. of Keytags:** max. 1024 per terminal
- Memory Capacity:** 7000 events / transactions

Dealer



Specifications subject to change without notice 09/10

Sole Distributor for Asia Pacific Region:

COSELEC PTE LTD

Blk 28 Kallang Place, #06-12/14 Singapore 339158

Tel: +65 6741 5200 Fax: +65 6741 6200

Email: info@coselec.com.sg Website: www.coselec.com.sg