

The dataLog product family manages nightworkers and provides a tool to measure performance of cleaners and security officers on patrol. Checkpoints located in the areas to be validated are read with a durable handheld data collector. Using a mobile phone and wireless Bluetooth communication, real time information on the person's activities and whereabouts can be provided on demand. PC based management solutions with clear and concise reporting provide a complete package.

## Easy Patrol I

Easy Patrol I for Windows is a management tool for management and verification of patrols for the most diverse security services. Easy Patrol allows you to easily about performed services to customers and their sites.

These services could include:

- **Security patrols**
- **Checks of technical equipment and installations**
- **Fire extinguisher surveillance**
- **Recording of work hours**
- **Establishing travel-times**
- **Proof of unscheduled checks**

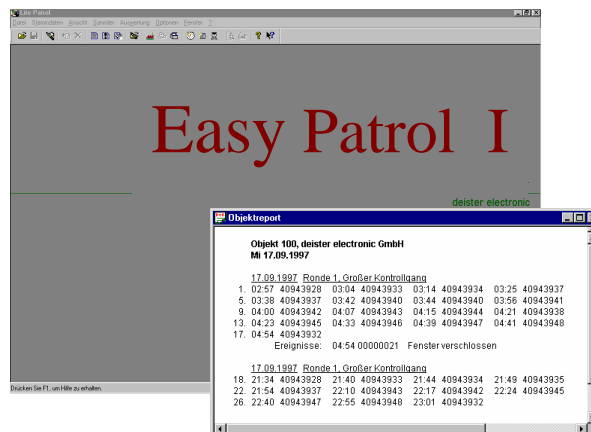
Ideal for Security and Facility management companies, this powerful easy-to-use evaluation system is uses Windows and provides a variety of fully detailed historic reports on any application which requires positive proof of a time date stamp.

### Configuration of Master Data

The following master data with various parameters and information fields are stored in the data base:

- **Customer data**
- **Location data**
- **Checkpoints**
- **Patrols**
- **Personnel data**
- **Time recording**
- **Events**

## Easy Patrol I – the software Package



### Evaluation of Collector Data

The data downloaded from the data collectors can be summarised in various comprehensive reports:

- **Location report** (everything you want to report to the customer)
- **Inspection report** (everything you need to know about your guard tours)
- **Exception report** (every deviation from the plan)
- **Checkpoints report**, collector report
- **Personnel report**

### Remote Data Transmission

Easy Patrol I for Windows can configure the data transfer units (deTrans, WKTrans) for remote data transmission and can configure the master data and communication parameters in the deReporter and WKReporter.

### Working with a LAN

The database can be stored on a LAN device and be accessed from various workplaces. Two password levels secure the access to the master data.

### Technical Data

<b>operating system:</b>	Windows 95/98/NT/2000/XP
<b>memory capacity:</b>	20 customers 20 locations 100 patrols 500 location checkpoints 100 event checkpoints 100 personnel checkpoints 20 calendars

### Accessories

**Master Patrol Viewer** for reading of the database and creating reports.